



Drinking water

KELEN PP-R hot & cold water piping system

- Hot & cold water piping system
- Pressure ratings: PN10, PN16, PN20
- Resistant to corrosion



KELEN

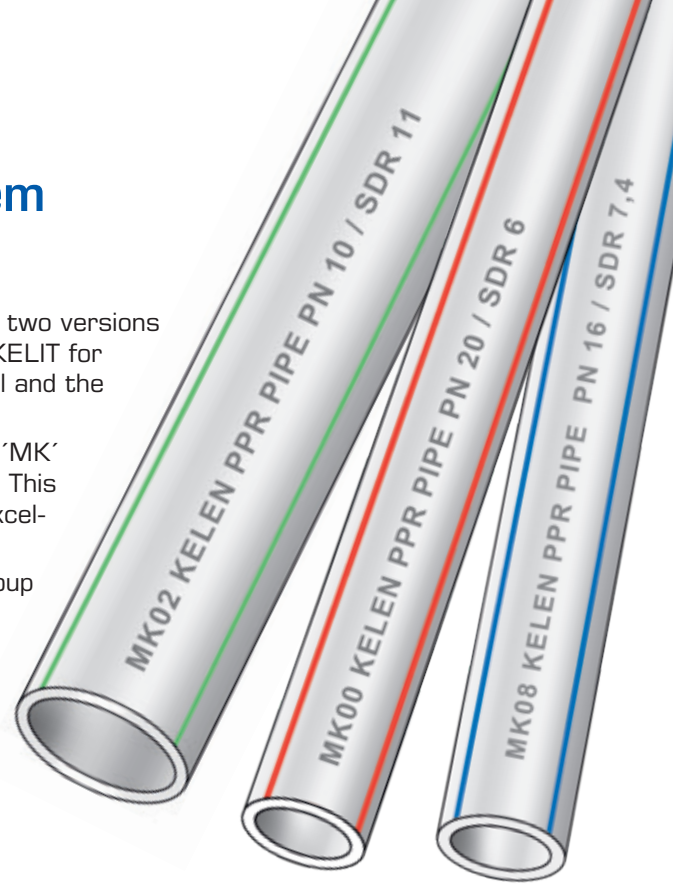
PPR hot & cold water piping system

KE KELIT Kunststoffwerk GmbH, based in Linz, Austria, now offers two versions of its KELEN range, which has been a flagship product range of KE KELIT for decades. The main difference between the ranges is the raw material and the type of metal insert.

The KELEN range as highlighted in this flyer is the PP-R range (with 'MK' group codes), with metal threads out of CW617N, high grade brass. This range is suitable for most Asian and Middle East markets, with an excellent price/quality ratio.

Next to this range we have the premium KELEN range (with 'KE' group codes), which is made out of PP-RCT raw material and has metal threads out of dezincification resistant brass (Cuphin).

Whichever type of KELEN you choose to use, you can be assured that it fits the KE KELIT quality standards and image which we have built for over 70 years. Both ranges are of course produced according to the latest European standards.



The four ways of joining the pipes

A wide range of safe and secure methods for joining the pipes is essential for a pipe system.

All KELEN polyfusion fittings from d20 to d110 are rated PN10/16/20. Fittings d160 are rated PN10/16.

KE KELIT has a comprehensive range of fittings for each method of joining. Please check the price list to see which sizes and pressure ratings are currently available.

1. Polyfusion welding

Fusion welding occurs when a large area of the outside of the pipe and the inside of the socket are welded together.

A wide range of welding fittings is available!

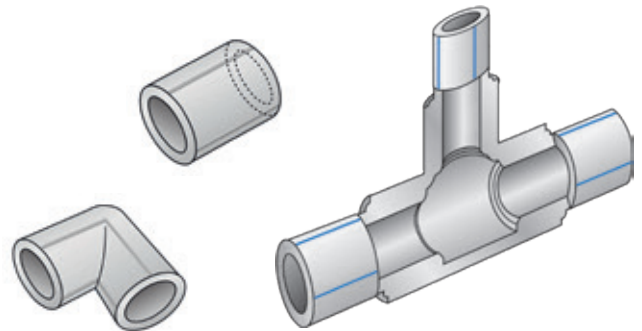
Sizes

Fittings d20 – d110

PN10/16/20

Fittings d160

PN10/16



Advantages

- Pipe and fitting are made of the same material. No additional materials are required
- Welded joints are not a weak point in the system
- Pipe can only enter the fitting after they have been heated on the welding machine (important safety feature)
- The weld does not cause a reduction in the flow at the joint

KE KELIT (M) SDN BHD

Lot 877, Jalan Subang 9, Taman Perindustrian Subang
47610 Subang, Jaya, Selangor, Malaysia

TEL. +(603) 8011 9966

FAX +(603) 8011 6996

E-MAIL office@kekelit.com.my



www.kekelit.com



2. Threaded adaptor fittings

The threads conform to ON EN 10226-1 and are made of CW617N (CuZn40Pb2) and nickel or tin plated. They are metal plated to protect against stress corrosion cracking. Male and female threads are available as both straight and elbow fittings.

Sizes

d20 x 1/2"– d90 x 3"

Advantages

- Wide range of fittings
- Female thread is a straight thread
- Male thread is tapered and roughened
- Thread is firmly anchored in the fitting
- High resistance to twisting



3. Flange connection

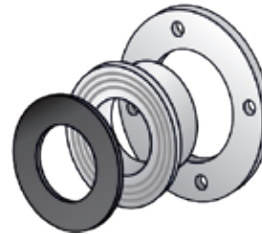
The solution for flanged fittings. Backing ring conforms to pipe sizes. Fusion welding: d40–d160

Sizes

d40–d160
PN10/16

Advantages

- Can be detached at any time
- Elastic EPDM seal
- Dimensions conform to DIN 2501-PN16



4. Detachable union fittings

Sizes

d20 x 1/2"– d90 x 3"

Advantages

- Detachable fittings
- Elastic EPDM seals
- KE55, KE56, KE57 fittings for connecting to appliances

3 types:



Facts

- KELEN fulfills and passes all EN ISO 15874 testing requirements
- The metal adaptors are made out of CW617N (CuZn40Pb2) and pore-free metal plating
- Resistant to internal and external corrosion caused by ions in the water or chemicals on the site
- No crystallisation points for lime deposits
- Secure joint technology which requires no additional materials
- Conforms to hygiene regulations and of course approved for transporting potable water
- Low pressure losses as a result of its smooth bore
- Low noise level
- Resistant to high temperatures and pressure
- Low thermal conductivity; comparison of λ -values:
KELEN 0,24 W/mK | Copper 320,00 W/mK | Cast iron/steel 42,00 W/mK
- Stringent testing and monitoring of quality to international standards
- Secure long-term performance

KELEN

PPR hot & cold water piping system



KE KELIT's quality targets

1. Our quality targets are not confined to the product. They include all areas covered by ÖNORM EN ISO 9001
2. Suppliers and customers are integrated into the quality assurance system to ensure that mistakes are prevented
3. Every employee is responsible for the quality of his own work and should be highly motivated to continually assess his work
4. Customer satisfaction can only be achieved by responding to the requirements of the customer and the market
5. A responsible attitude to the environment can only be achieved by manufacturing long-life products by environment-friendly processes



KE KELIT Malaysia



KE KELIT Austria - Headquarter

KE KELIT (M) SDN BHD
Lot 877, Jalan Subang 9, Taman Perindustrian Subang
47610 Subang, Jaya, Selangor, Malaysia
TEL. +(603) 8011 9966
FAX +(603) 8011 6996
E-MAIL office@kekelit.com.my



www.kekelit.com

